

A frame from MELT (2010), directed and choreographed by Noémie Lafrance, produced by Natalie Galazka



Join us at  
the 8th Annual

# Sans Souci Festival of Dance Cinema

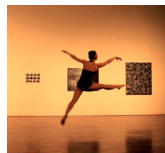
Friday & Saturday, Sept. 16-17th, CU-ATLAS Black Box Studio

University of Colorado Boulder, Roser ATLAS Building, 1125 18th Street, downstairs, lowest basement level, B2  
Video Installation opens 6:30 p.m. Dance short films & live performance begin 7:30 p.m.

**FREE and open to the public.** Reservations recommended. Reserve your seat, <http://SansSouciFest.org>.

Co-sponsored by CU's Department of Theatre & Dance, the Film Studies Program and ATLAS Institute.

The Sans Souci Festival of Dance Cinema is a niche film festival dedicated to works that merge dance and cinematic art forms.

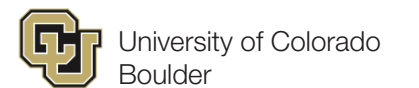


The films cover a wide range of dance genres, locations, cinematic style and form. This year, the festival exhibits shorts and documentaries from ten countries on three continents.

**Note:** Each of the two ATLAS evenings and four library sessions (listed below) present completely different sets of films.

**See more Sans Souci film at the Boulder Public Library,** Main Branch, 1001 Arapahoe Ave. 6:30 p.m. Mondays, Oct. 3 and 10, Canyon Theater; 3 p.m. Wednesdays, Oct. 5 and 12, Pulse Point

Co-sponsored by the Boulder Arts Commission Dance Bridge and the Boulder Public Library Cinema Program.



Follow ATLAS on:  
  
Visit <http://atlas.colorado.edu>

**ATLAS**  
INSTITUTE  
email: [cuatlas@colorado.edu](mailto:cuatlas@colorado.edu)  
phone: 303-735-4577